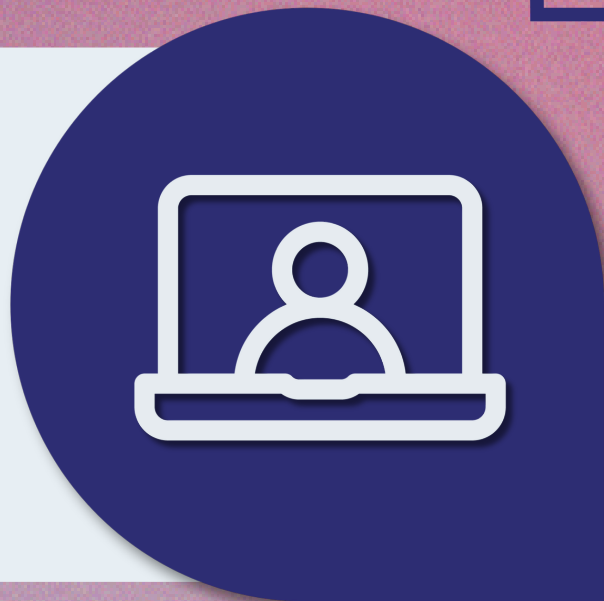


2026

NATIONAL STUDENT SURVEY RESULTS

WHAT IS THE NSS?

The National Student Survey (NSS) is an annual survey (commissioned by the Office for Students) to get honest feedback from students in higher education.



WHAT WAS ASKED?

The question regarding Open SU on the NSS was "How well does the Students' Union (Association or Guild) represent students' academic interests?"

OUR RESULT

83.5%

Positivity measure

This is higher than our 2025 measure of 83.1%.



COMPARISON

4.8%

Our result is 4.8 percentage points higher than the average positivity rating for Student Unions across the UK (78.7%).

WHAT THIS MEANS FOR OPEN SU

This result will inspire us to keep improving the ways in which we listen to you – our students – and represent your interests.

